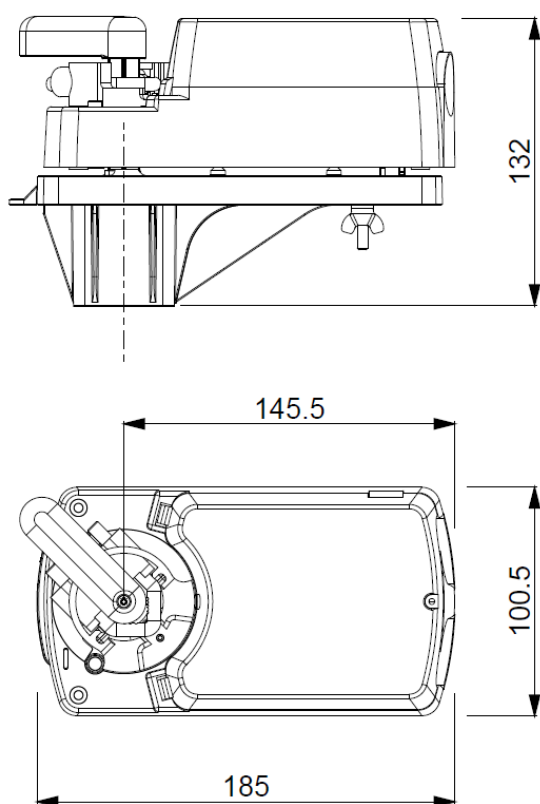


## DESCRIPTION

# SN08

230V electromotive actuator floating (3 points) and ON/OFF (2 points) to drive Pressure Independent Control Valve **EvoPICV series 81 and 83**. With manual override and angle limitation system. 1 m cable included.

## DIMENSIONS



Dimensions in mm

## TECHNICAL FEATURES

Type	Floating and ON/OFF
Supply voltage	100...240V AC $\pm 10\%$ – 50/60 Hz
Power consumption	4.5 W – Stand-by 0.5 W
Max. rotation	0 – 90°
Angle limitation	5 – 85° (increment 5°)
Torque	8 Nm
Running time	31 s – 90°
Life cycle	60.000
Storage temperature range	-30° / + 70°C (@)
Ambient temperature range	-20° / + 50° C (@)
Humidity range	5-95% RH
Degree of protection	IP54/II
Weight	1.2 kg
Colour	Black/Blue
Cable	1 m
Connection to valve	F03, 9mm square, EN5211
Noise level	45 dB(A)

(@) no condensation

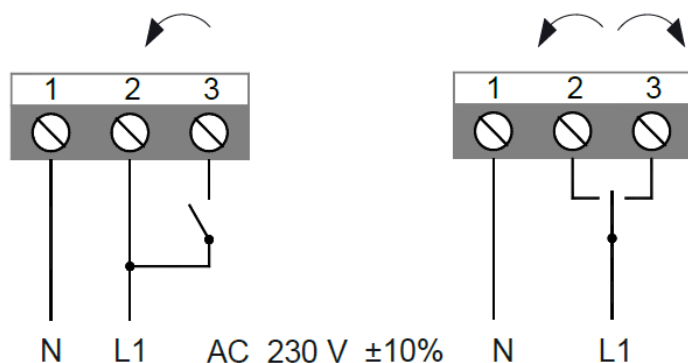
Electromotive actuators **SN08 - 230V** are used to make floating control systems (usually known as “3 points”) and ON/OFF (“2 points”) of HVAC installations where **EvoPICV** balancing valves are exploited. It can be installed on **DN40 and DN50 83** series with the presetting tool **081PR1**. It can be also run onto **81, 83 DN25-DN32** and **83 DN40-DN50** without presetting tool. To preset the valves, please refer to dedicated technical specifications.

For further information about electrical connections, see the specific section.

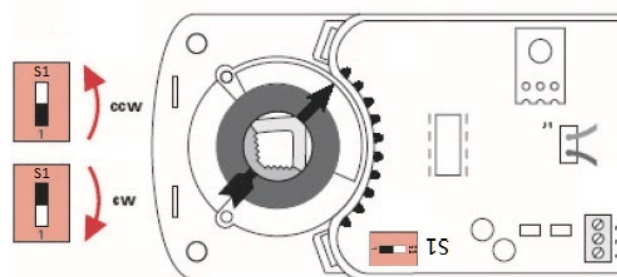
## APPROVALS



## CONNECTION SCHEMES



## ROTATION DIRECTION SETTING



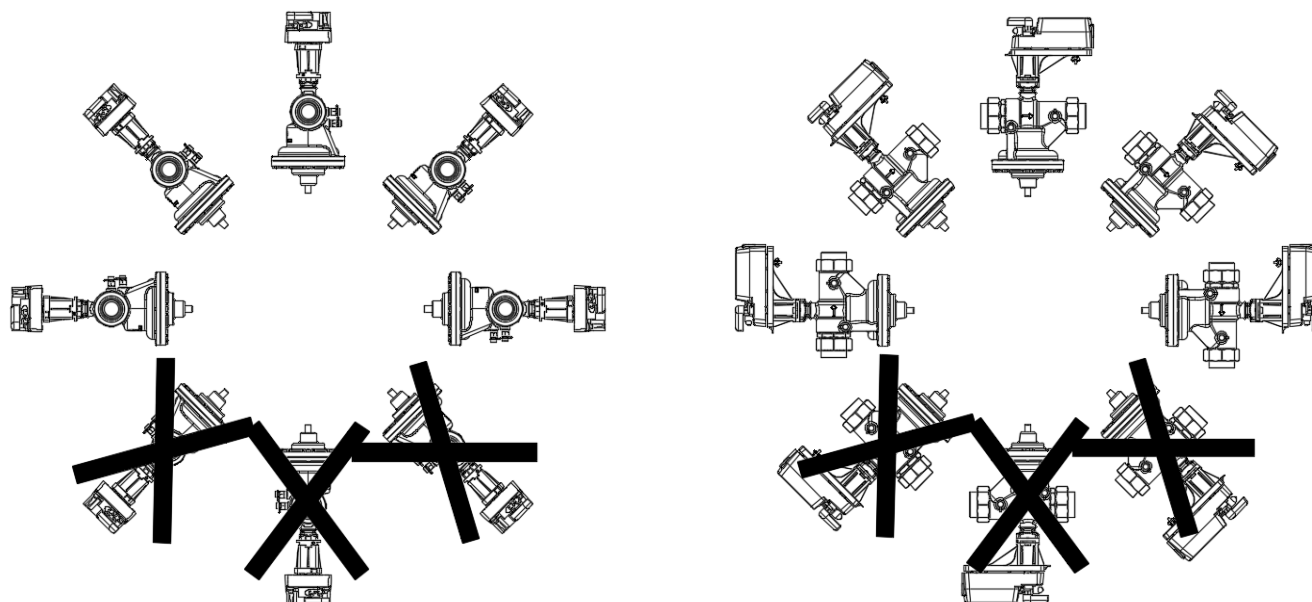
S1 ON: clockwise;

S1 OFF: counter clockwise;

With factory settings (see picture above, S1 OFF), if wires 1 and 2 are connected the valve opens; if wires 1 and 3 are connected valve closes.

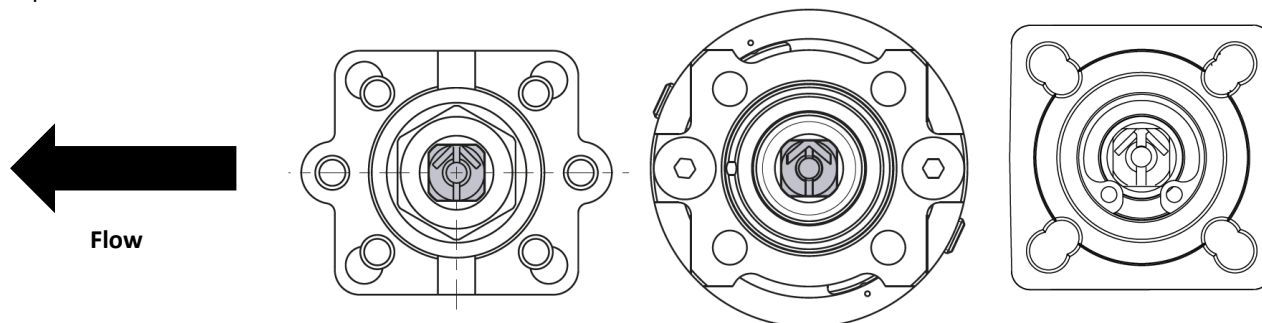
## INSTALLATION

It is highly suggested to install **SN08** electromotive actuators in safe orientation that means potential leakage from the stem does not damage them. Thus any upside down installation must be avoided.

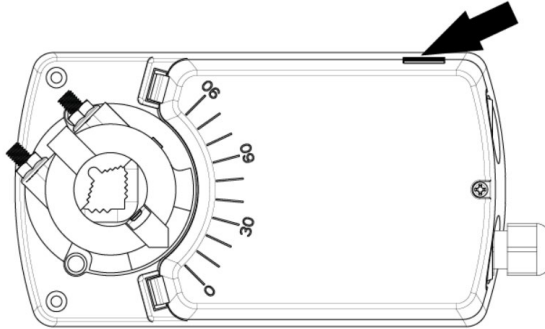


### Mounting on valves

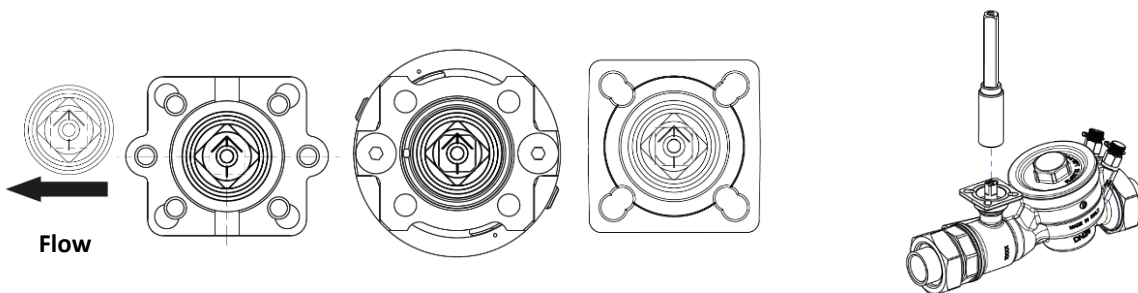
1. Close the valve by rotating clockwise the stem, getting it as in the picture below: the arrow must be right oriented with respect to the flow direction.



- Close the actuator (arrow toward 0°) by pushing the manual override (black button on the right) and rotating clockwise. In case the actuator is already closed, skip this point.



- Place the stem adapter on the valve stem and make sure the arrow on the adaptor is aligned with the arrow on the valve stem.



- Place the plastic support and fix it through the 4 screws according to the valve type. Then, place the actuator (in position 0°), block it behind and fix the stem adaptor. Assembly the lever.

