



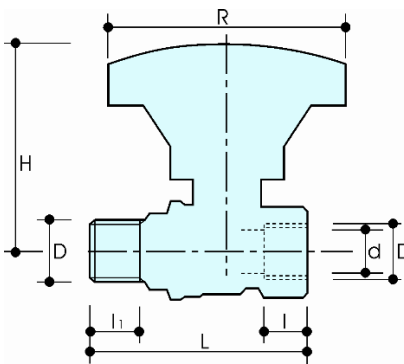
DESCRIPTION

53/1

F x M heavy duty full-flow ball valve with reducer (gear handle).

Conform to EN 13828

DIMENSIONS



D	1/4"	3/8"	1/2"	3/4"	1"	1 1/4"	1 1/2"	2"
d	10	10	15	20	25	32	40	50
H	63	63	66	72	78	83	114	121
I	11.5	12	17	18	21.5	23.5	23.5	28
I1	11.5	12	17	18	21.5	23.5	23.5	28
L	56	57.5	70	79	93.5	106	117	138.5
R	70	70	70	70	70	70	110	110
Weight [g]	200	190	240	380	660	1030	1420	2100

Dimensions in mm

All threads are conform to ISO 7 or ISO 228 standards

MATERIALS

- Body** CW617N (DIN 50930 part.6) CuZn40Pb2
- Ball** CW617N (DIN 50930 part.6) CuZn40Pb2 Diamond polished and chrome plated
- Stem** CW614N (DIN 50930 part.6) CuZn39Pb3
- Stuffing box** CW614N (DIN 50930 part.6) CuZn39Pb3
- Seat** 2 x PTFE
- O-Rings** 2 x FKM Viton®
- Lever** Nylon fiber

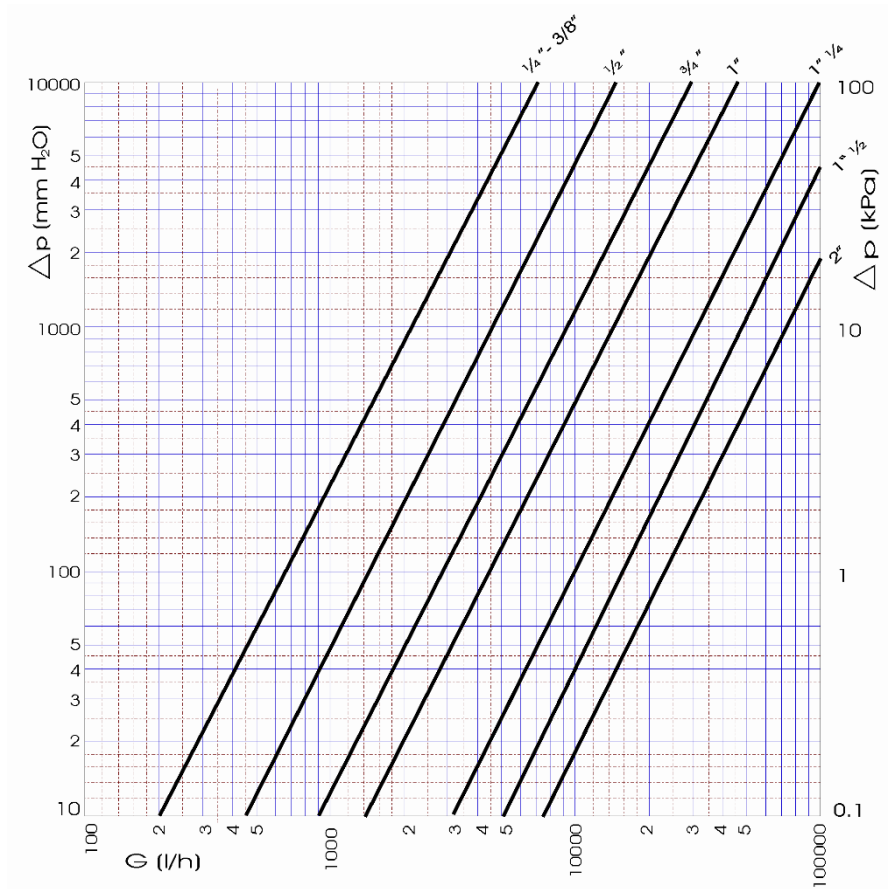
APPROVALS



RECOMMENDED WORKING TEMPERATURE/PRESSURE LIMITS

- 30 bar – 100°C – non shock
- 10 bar – 150°C – non shock

PRESSURE DROP DIAGRAM



Dim.	1/4"	3/8"	1/2"	3/4"	1"	1 1/4"	1 1/2"	2"
Kv	6.6	6.7	14.5	30	45	97	150	220
PN	42	42	42	42	35	35	35	35

TEMPERATURE / PRESSURE DIAGRAM

