

**HUMIDITY SENSOR
U2DP**

The humidity sensor **U2DP** reveals the moisture formation on main supply pipes in radiant surfaces when cooling mode is on. If the moisture is found, the sensor sends a warning signal to the control unit which immediately closes down the thermo-electric actuators (series **A54202 – A54204 – A54402 – A54404**) on the collectors, protecting the system. If the available space close to the supply pipe is not enough to install the humidity sensor **U2DP**, the remote humidity sensor **U2DPRS** can be used.


The humidity sensor **U2DP** can be coupled only with the following products:

- **U2W404/ U2W408/ U2W412**
- **U2W4E04/ U2W4E08/ U2W4E12**
- **U2W204/ U2W208/ U2W212**
- **U2W2E04/ U2W2E08/ U2W2E12**

Every other use is considered as not intended and the manufacturer warranty is not more valid.

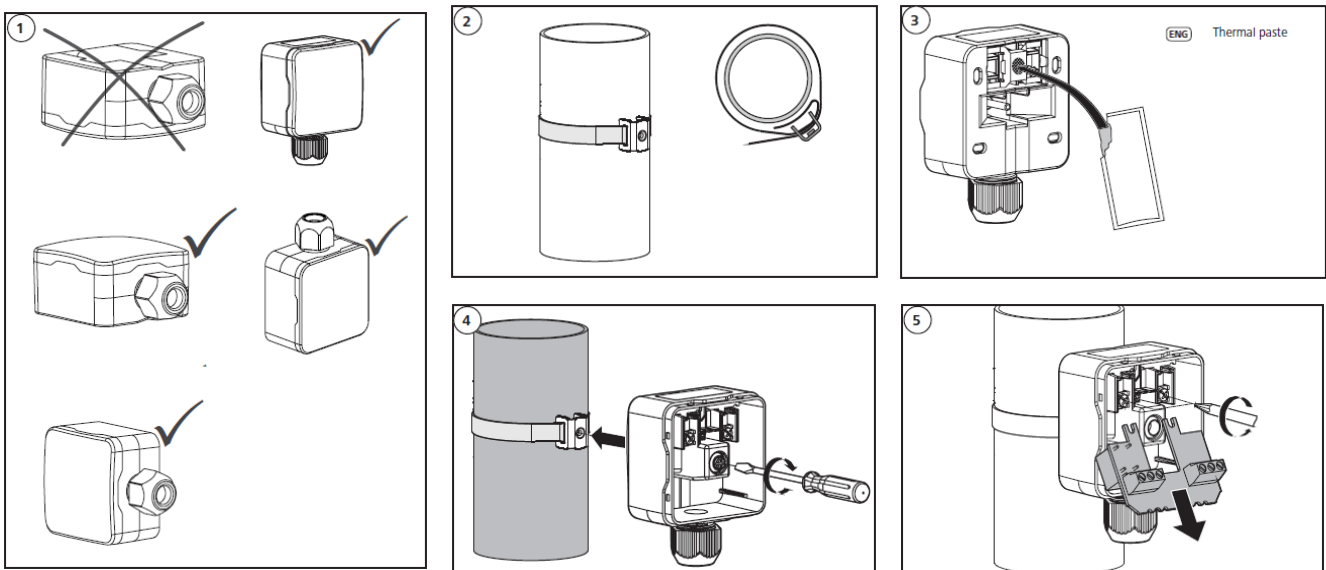


TECHNICAL DATA

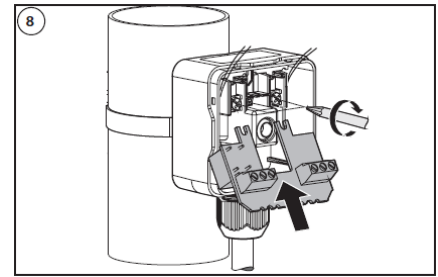
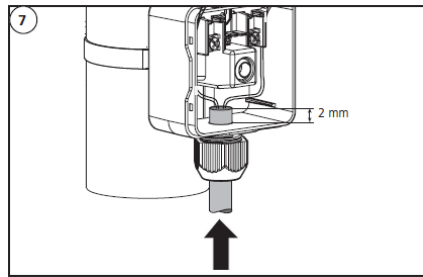
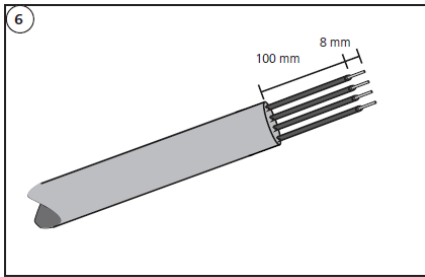
Type	U2DP	APPROVALS
Operating voltage	24 V AC/DC	 EN 60730/1
Power consumption	0,4 W	
Degree/Class of protection	IP40 / III	
Ambient temperature	5°C to 60°C	
Air humidity	Max. 100%	
Dimensions (mm)	60/81/36,5	
Connection cable	4 x 0,25 – 0,5 mm ² (not supplied)	
Pipe diameter the sensor can fit for	10 – 100 mm	
Function mode	Type 1 C*	

*: function mode for humidity sensors defined "automatic micro-interruption of relay", according to EN 60730/2/9 standard

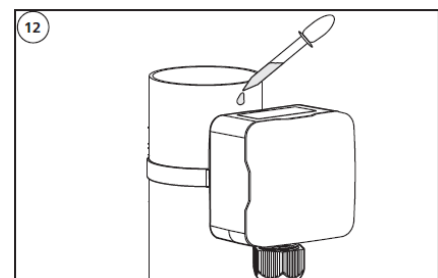
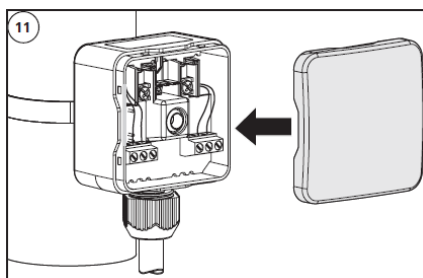
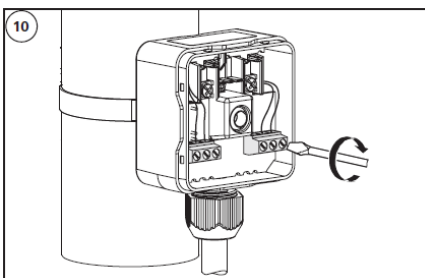
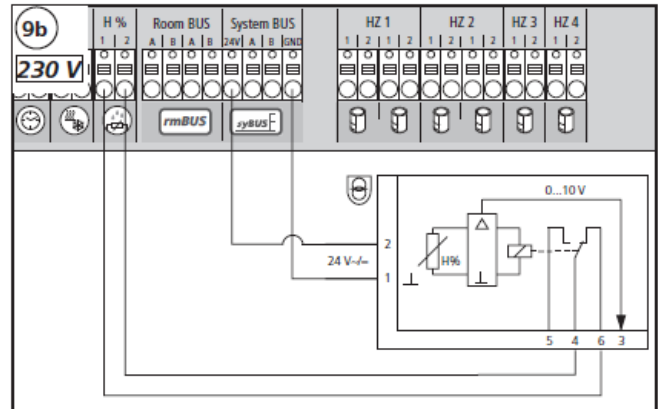
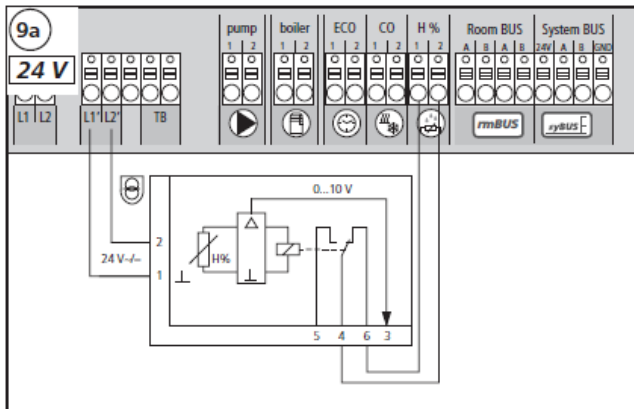
INSTALLATION



STEO165 rev.00 09/11/2015



Wiring according to the available control unit as shown by figures 9a and 9b. Possible reversal of cables at the 24 V and 230V control units damages the humidity sensor.



PACKAGE CONTENT

