

**REMOTE HUMIDITY SENSOR
U2DPRS**

The remote humidity sensor **U2DPRS** reveals the moisture formation on main supply pipes in radiant surfaces when cooling mode is on. If the moisture is found, the sensor sends a warning signal to the control unit which immediately closes down the thermo-electric actuators (series **A54202 – A54204 – A54402 – A54404**) on the collectors, protecting the system. The remote humidity sensor **U2DPRS** can be used as an alternative to the humidity sensor **U2DP** if the available space close to the supply pipe is not enough to install the humidity sensor **U2DP**.

The remote humidity sensor **U2DPRS** can be coupled only with the following products:

- **U2W404/ U2W408/ U2W412**
- **U2W4E04/ U2W4E08/ U2W4E12**
- **U2W204/ U2W208/ U2W212**
- **U2W2E04/ U2W2E08/ U2W2E12**

Every other use is considered as not intended and the manufacturer warranty is not more valid.

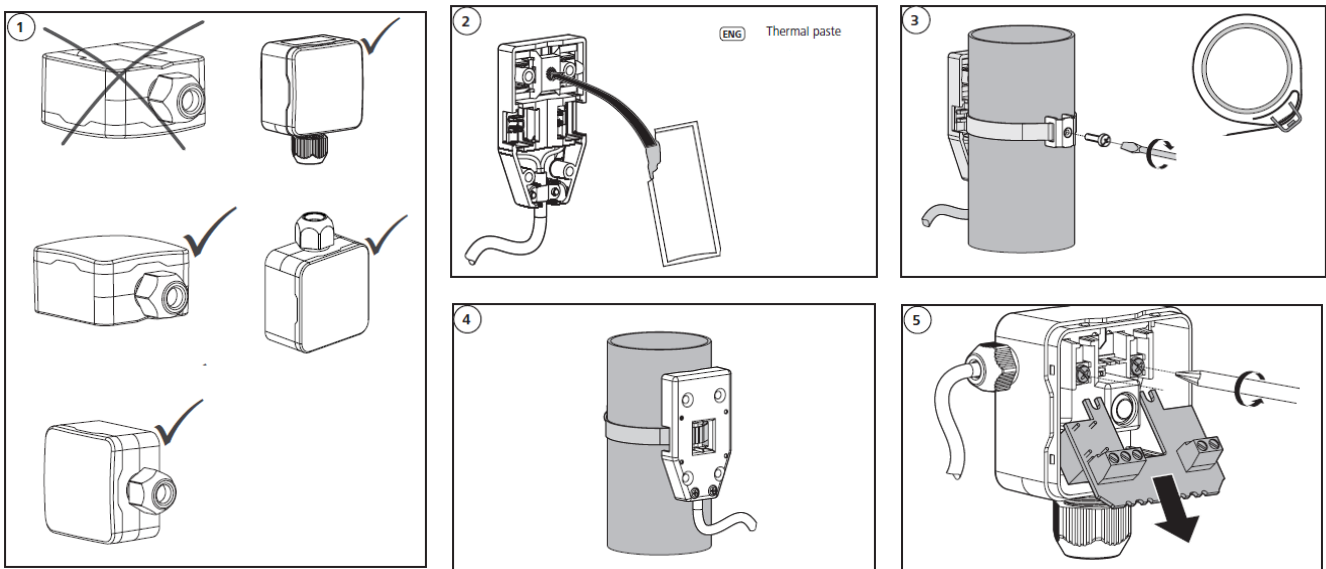


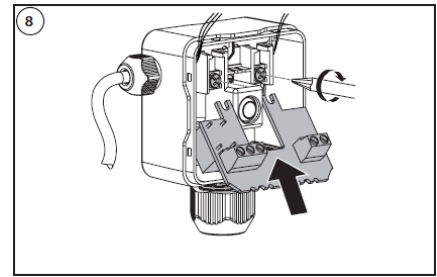
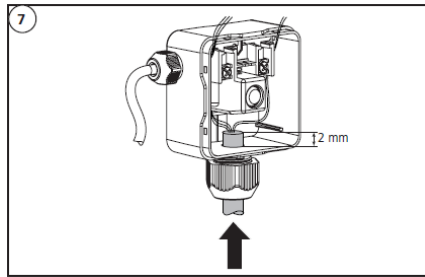
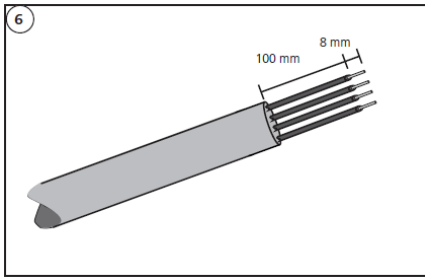
TECHNICAL DATA

| Type | U2DPRS | APPROVALS |
|--------------------------------------|---|------------|
| Operating voltage | 24 V AC/DC | CE |
| Power consumption | 0,4 W | |
| Degree/Class of protection | IP40 / III | EN 60730/1 |
| Ambient temperature | 5°C to 60°C | |
| Air humidity | Max. 100% | |
| Dimensions of control unit (mm) | 60/81/36,5 | |
| Dimensions of remote sensor | 36/62/11 | |
| Connection cable | 4 x 0,25 – 0,5 mm ² (not supplied) | |
| Pipe diameter the sensor can fit for | 10 – 100 mm | |
| Function mode | Type 1 C* | |
| Length of sensor cable | 1000 mm | |

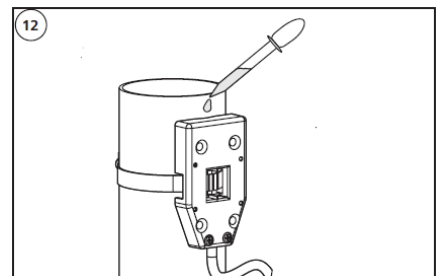
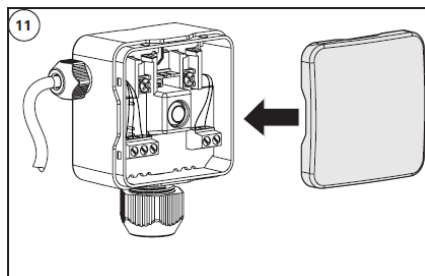
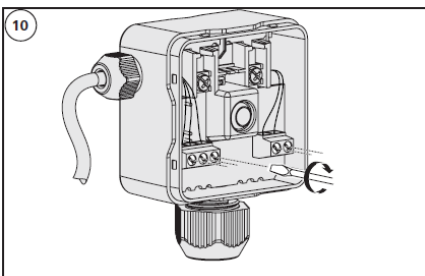
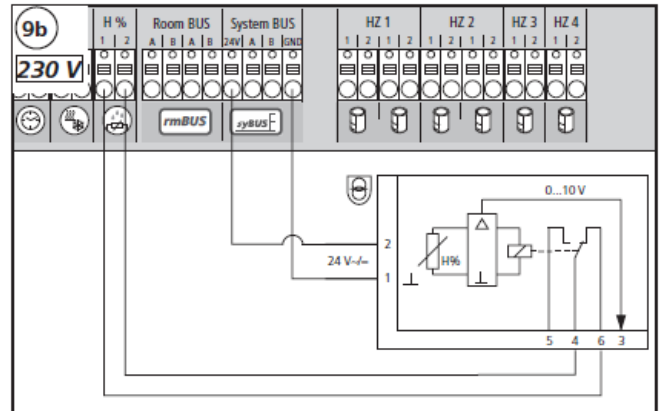
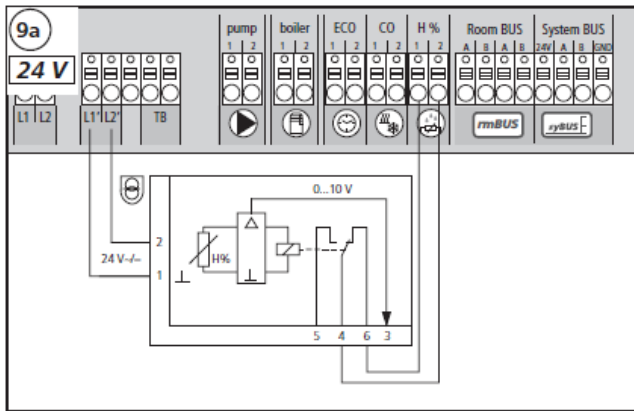
*: function mode for humidity sensors defined "automatic micro-interruption of relay", according to EN 60730/2/9 standard

INSTALLATION





Wiring according to the available control unit as shown by figures 9a and 9b. Possible reversal of cables at the 24 V and 230V control units damages the humidity sensor.



PACKAGE CONTENT

