

**EXTERNAL ANTENNA
U2WA**

The external antenna **U2WA** increases the radio range of the wireless control units **U2W** from room thermostats when the reception is bad. It can occur if the control unit is installed inside metallic wall boxes which become "Faraday cages".


The antenna can be coupled only with the following products:

- **U2W404/ U2W408/ U2W412**
- **U2W4E04/ U2W4E08/ U2W4E12**
- **U2W204/ U2W208/ U2W212**
- **U2W2E04/ U2W2E08/ U2W2E12**

Every other use is considered as not intended and the manufacturer warranty is not more valid.

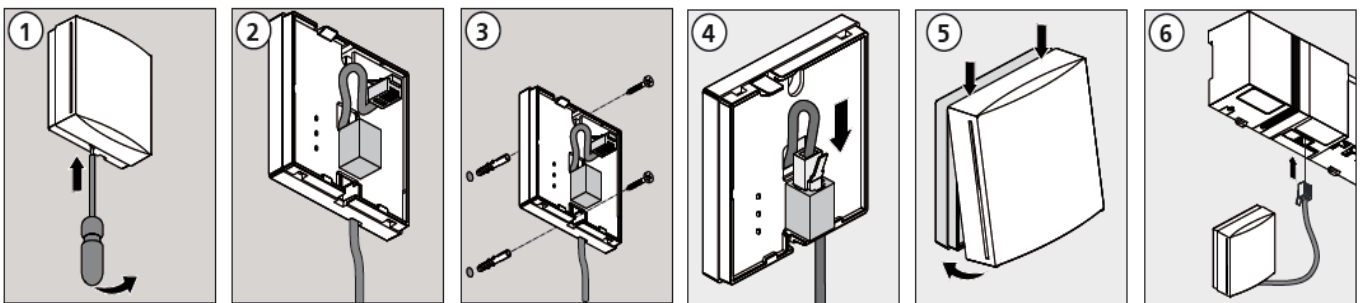


TECHNICAL DATA

| Type | U2WA | APPROVALS |
|----------------------------|------------------------------------------|--------------------------------------------------------------------------------------------------------------|
| Operating voltage | Supply by control unit U2W series |  EN 60730/1 |
| Power consumption | <1 W | |
| Operating frequency | 868 MHz SRD band | |
| Degree/Class of protection | IP30 / III | |
| Range | >25 m inside buildings | |
| Ambient temperature | 0°C to 55°C | |
| Storage temperature | -25°C to +70°C | |
| Air humidity | max. 80% ¹ | |
| Dimensions (mm) | 76/76/35 | |
| Weight | 115 g | |
| Length of connection cable | 5 m | |

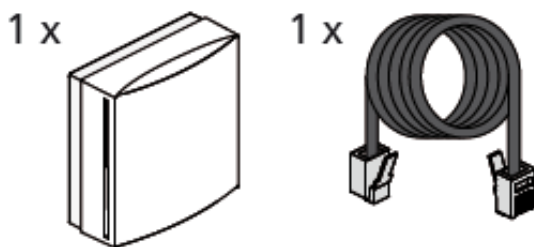
1 – non condensing

INSTALLATION



Caution! For the electrical connection of the external antenna **U2WA** use only the cable which is provided.

PACKAGE CONTENT



EXAMPLE OF APPLICATION

