

**REPEATER
U2WR**

The repeater **U2WR** extends the radio range of the wireless control units **U2W** in order to reach also the furthest thermostats.


The repeater can be coupled only with the following products:

- **U2W404/ U2W408/ U2W412**
- **U2W4E04/ U2W4E08/ U2W4E12**
- **U2W204/ U2W208/ U2W212**
- **U2W2E04/ U2W2E08/ U2W2E12**

Every other use is considered as not intended and the manufacturer warranty is not more valid.

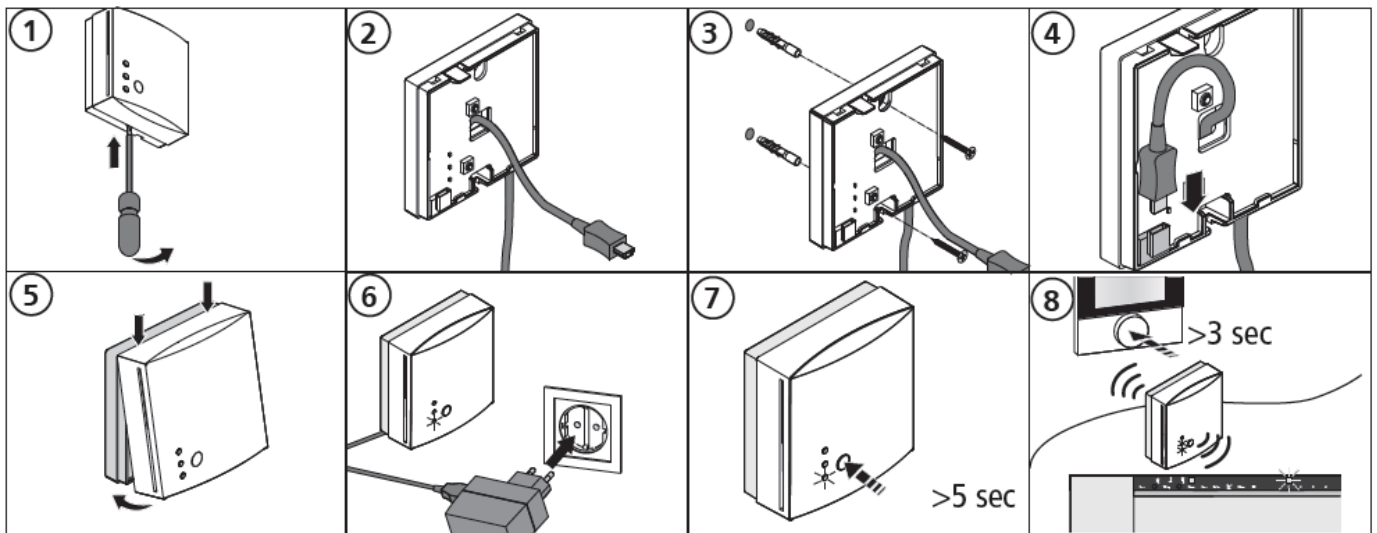


TECHNICAL DATA

Type	U2WA	APPROVALS
Operating voltage	5 V via power supply	 EN 60730/1
Power consumption	<1 W	
Operating frequency	868 MHz SRD band	
Degree/Class of protection	IP30 / III	
Range	>25 m inside buildings	
Ambient temperature	0°C to 55°C	
Storage temperature	-25°C to +70°C	
Air humidity	max. 80% ¹	
Dimensions (mm)	76/76/35	
Weight	115 g	
Length of connection cable	1,5 m	

1 – non condensing

INSTALLATION

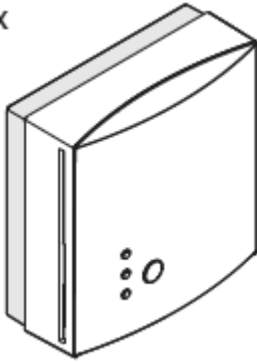


Direct pairing procedure of non-receiving room thermostat to the wireless control unit and wall installation:

1. Open the repeater with a flat screwdriver.
2. Insert the cable of the power supply into the housing from the back
3. Install the repeater
4. Connect the repeater to the power supply, put the jack into the specific socket
5. Close the repeater cover
6. Power the repeater, putting the main plug into a house socket. The green LED are lighted
7. Active the pairing mode on the repeater pushing the button for more than 5s. The green LED starts flashing
8. Perform the radio test on the room thermostat. The green and yellow LED are lighted

PACKAGE CONTENT

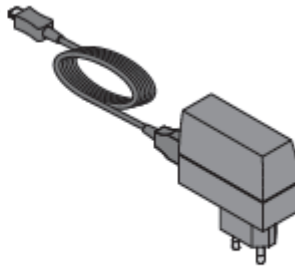
1 x



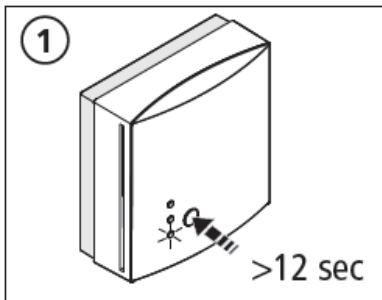
1 x



1 x

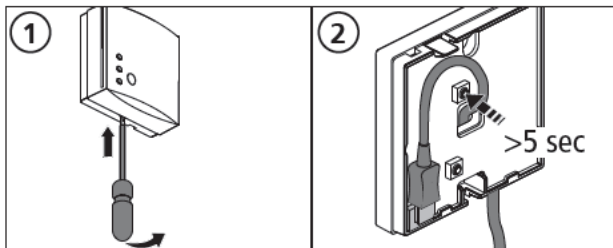


RESTORE OF FACTORY SETTINGS



Press the pairing button for more than 12 seconds

SWITCHING OFF LEDs



1. Open the housing
2. Press the higher button for more than 5 seconds