

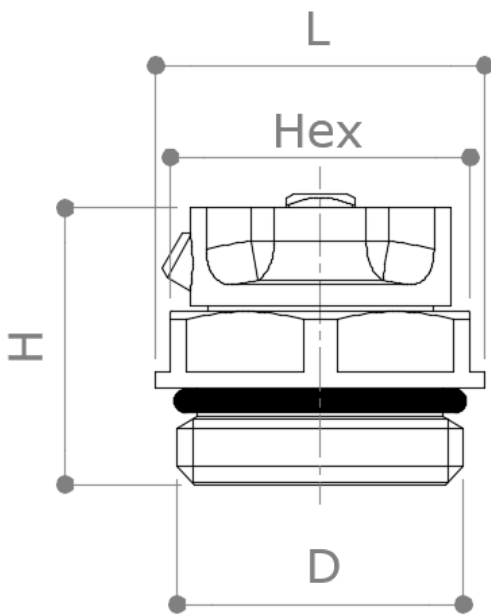


DESCRIPTION

# VS620

Orientable manual air vent.  
Nickel plated

DIMENSIONS



<b>D</b>	<b>3/8"</b>	<b>1/2"</b>
<b>L</b>	21	24
<b>H</b>	20.5	20
<b>Hex</b>	19	22
<b>Weight [g]</b>	20	22

Dimensions in mm

Thread conform to ISO 228 standard (max tightening torque: 40 Nm)

MATERIALS

<b>Body</b>	CW614N (EN 12164) CuZn39Pb3 Nickel plated
<b>Screw</b>	CW614N (EN 12164) CuZn39Pb3 Nickel plated
<b>Orientable head</b>	Nylon-6 white
<b>O-Ring</b>	EPDM

TECHNICAL FEATURES

- Operative pressure: 4 bar (peak 13 bar)
- Operative pressure: 80°C (peak 130°C)
- Air purging: min 30 l/h at 2 bar with one opening turn
- Screw tightening torque: max 2 Nm / min 0.8 Nm
- Head rotation torque: max 3 Nm